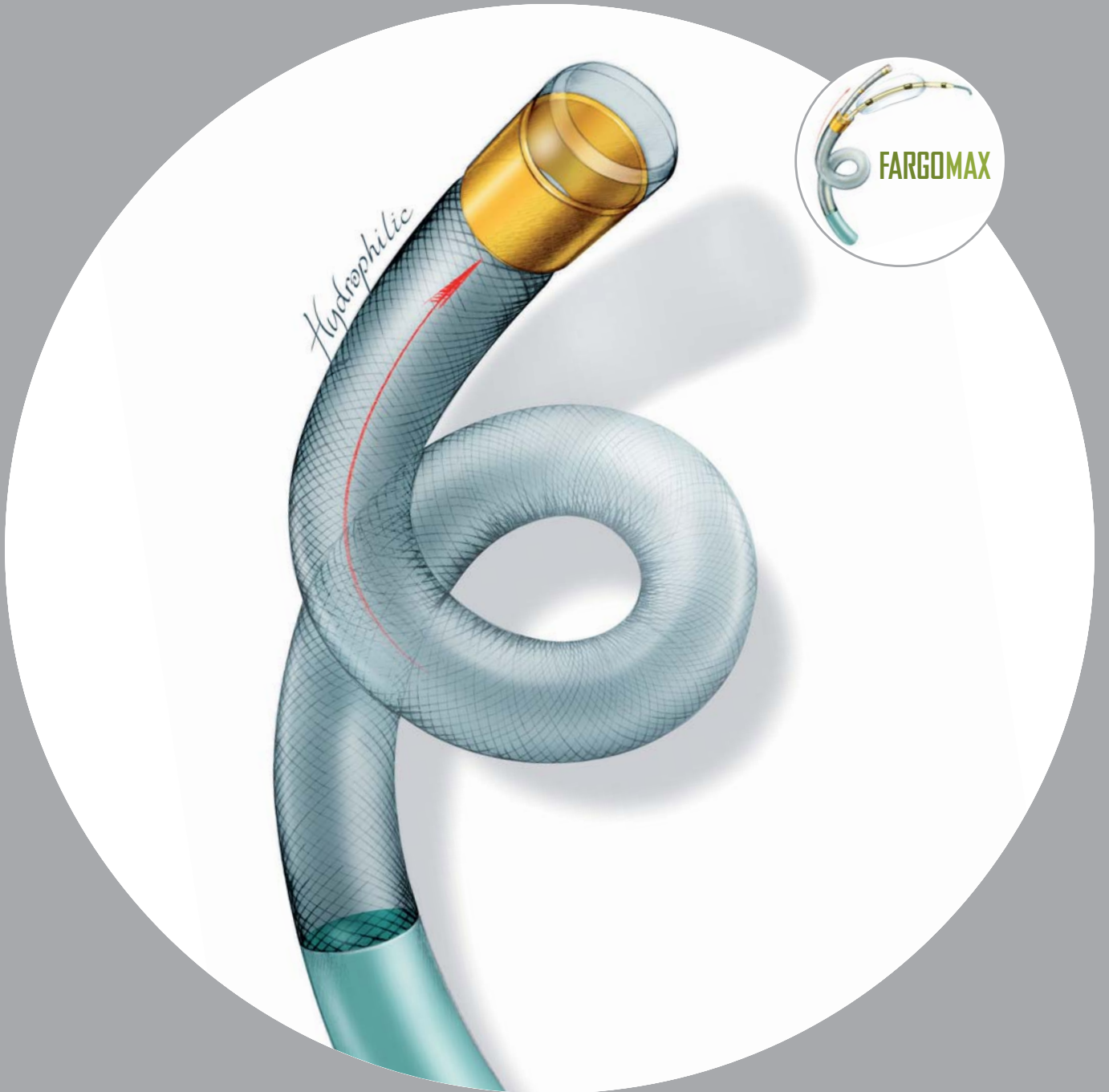


**NEW!**

# FARGOLINE

SYSTEM FOR ACCESSING DISTAL INTRACRANIAL VESSELS

FARGO | FARGOMAX | FARGOMINI



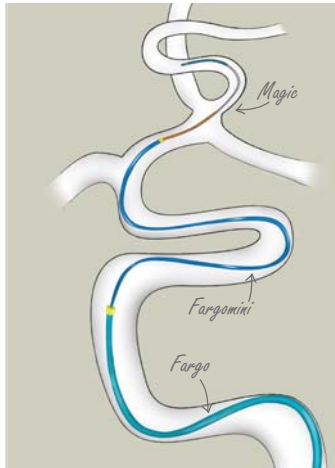
L'INNOVATION SUR MESURE\*  
[www.balt.fr](http://www.balt.fr)

**NEW!**

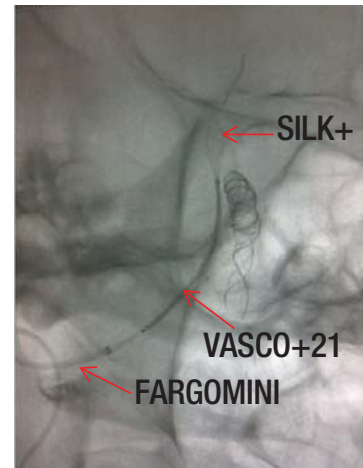
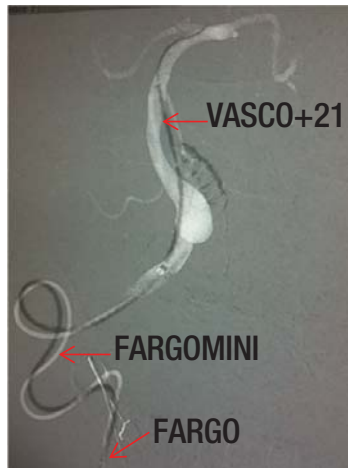
# FARGOMINI 040 (ID:1.02mm/.040"/3.1F)

● **TRIAXIAL TECHNIQUE:** FARGO- FARGOMINI- microcatheter (OD<3F, such as VASCO+21)

in AVM treatment

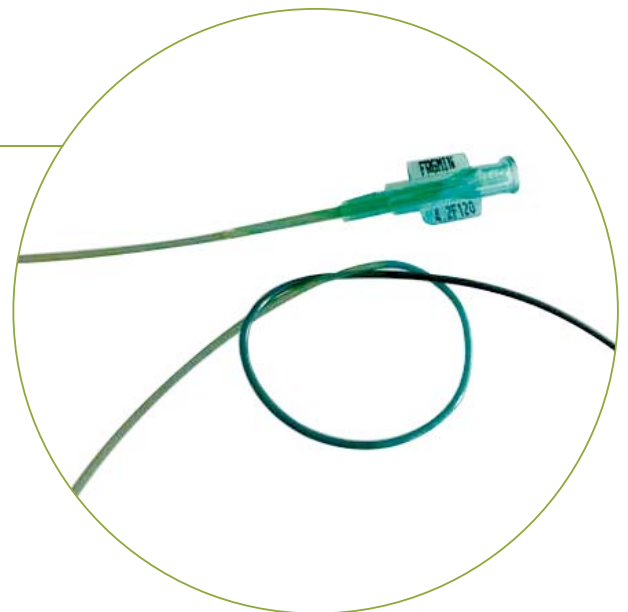


in Aneurysm treatment



**NEW NITINOL inner braiding struts:**

- KINK RESISTANCE
- DISTAL SUPPLENESS  
(extra supple dist part: 2.5cm and 15cm)



**Use FARGOMINI 040:**

- For **Distal Navigation**
- For **Distal Stability:** To control the microcatheter's tip
- For **Distal High Flow road map** inside a 6F guiding catheter (.070"), thanks to its small OD

# FARGO 055 (ID:1.40mm/.055"/4.2F)



- **OD: 6F** (2mm) proximal end; **4.9F** (1.63mm) distal end
- **FLEXIBILITY** with extra-supple distal tip, to pass acute curves

#### Use FARGO 055:

- When your standard guiding catheter is not stable enough
- Together with a long introducer and the VASCO+ for your SILK cases



# FARGOMAX 070 (ID:1.78mm/.070"/5.3F)

- **OD: 6F** (2mm) proximal and distal ends
- **SUPPLENESS** with extra-supple distal tip, enabling to pass through acute curves
- **Large ID 1.78mm (0.070")** to fit both a balloon-tipped microcatheter (ECLIPSE or COPERNIC) and a coiling microcatheter (VASCO+10)

#### Use FARGOMAX 070:

- For your remodeling balloon assisted coiling procedures with VASCO+10 and ECLIPSE or COPERNIC
- Together with a long introducer and the VASCO+ for your SILK cases
- For High Flow Road Maps



# FARGO LINE

SYSTEM FOR ACCESSING DISTAL INTRACRANIAL VESSELS

## FARGOMINI 040 (ID:1.02mm/.040"/3.1F)



REFERENCE	OUTER Ø PROXIMAL - DISTAL	INNER Ø	TOTAL LENGTH (CM)	SUPER-SUPPLE DISTAL TIP LENGTH (CM)	DISTAL PRE-SHAPED CURVES
FRGMIN4,2F120   D MP	4,2F-3,9F	1.02mm (.040")	120	2,5	Straight (D)/ 45° (Multi Purpose)
FRGMIN4,2F135   D MP			135	15	

## FARGO 055 (ID:1.40mm/.055"/4.2F)

REFERENCE	OUTER Ø PROXIMAL - DISTAL	INNER Ø	TOTAL LENGTH (CM)	SUPER-SUPPLE DISTAL TIP LENGTH (CM)	DISTAL PRE-SHAPED CURVES
FRG6F105_8   D MP	6,0F-4,9F	1.40mm (.055")	105	8	Straight (D)/ 45° (Multi Purpose)
FRG6F115_8   D MP			115		
FRG6F125_8   D MP			125		
FRG6F135_15   D MP			135	15	

## FARGOMAX 070 (ID:1.78mm/.070"/5.3F)

REFERENCE	OUTER Ø PROXIMAL - DISTAL	INNER Ø	TOTAL LENGTH (CM)	SUPER-SUPPLE DISTAL TIP LENGTH (CM)	DISTAL PRE-SHAPED CURVES
FRGMAX6F95_8   D MP	6,0F-6,0F	1.78mm (.070")	95	8	Straight (D)/ 45° (Multi Purpose)
FRGMAX6F105_8   D MP			105		
FRGMAX6F115_8   D MP			115		
FRGMAX6F125_8   D MP			125		



10, rue de la Croix Vigneron  
95160 Montmorency • France  
Tél. : +33 (0)1 39 89 46 41  
Fax : +33 (0)1 34 17 03 46  
www.balt.fr